

I-MAX TOUCH

digital panoramic/ceph system



866.ASHTEL.1 • ashteldental.com

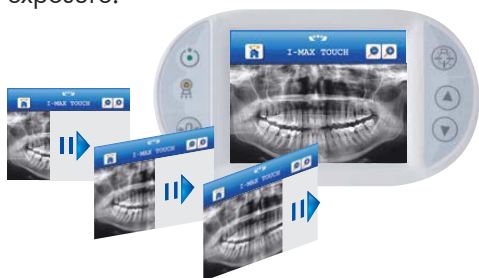


I-Max Touch

FULL CONTROL AT YOUR FINGERTIPS

SAVE PRECIOUS TIME

View your image instantaneously and with precision on the screen, as it is displayed during acquisition. The touch screen also provides access to pre-programmed standard examinations. For each one, the trajectory is optimized during exposure.



INSTANT IMAGING

See your images appear on the touch screen in real time.



DIRECT CONTROL

Zoom and move around the image with the control panel.

ASHTEdental 

877.274.8358 > ashtedental.com



A new intuitive approach

NETWORK INTEGRATION & USB DATA STORAGE

Optional cephalometric arm



USB STORAGE

Transfer your images to a USB drive and then import them to any computer.



CEPH OPTIONS

Choose between single or dual-sensor mode at any time, depending on the intended use (pano or cephalometric). Each sensor can be moved using its ergonomic handle that facilitates the transfer.



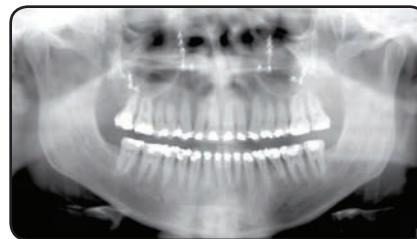
NETWORK SHARING

The I-Max Touch can be operated from your computer or from any workstation connected to your network!

12 PROGRAMS

Combinations for all patient heights;

- Standard panoramic adult
- Standard panoramic child
- Reduced dose panoramic
- Panoramic with improved orthogonality
- Left semi-panoramic
- Right semi-panoramic
- Incisive block
- Maxillary sinus
- TMJ - open or closed mouth
- Lateral ceph
- Frontal ceph
- Carpus



PATIENT UNDERSTANDING

Quality images will offer informative explanations, creating an understanding of the treatment plan shared between you and your patients.

SPECIFICATIONS

I-Max Touch

| | | | |
|----------------------------------|-------------------------------------|-----------------------------------|--|
| • HF generator | At constant potential | • Enlargement | Constant 1:1 |
| • Focal spot | 0.5 EN60336 | • Digital sensor | HD CCD + optical fiber plate |
| • Min. total filtration | 2.5 mm Al equivalent | • CCD active surface | Pan 6 x 144 mm / Ceph 6 x 216 mm |
| • Anode voltage | 60 - 86 kV | • Resolution CCD | 10.4 lp/mm |
| • Anode current | Pan 6 - 10 mA / Ceph 6 - 12 mA | • Pan max. theoretical resolution | Direct acquisition (network cable) and/or integrated touch screen |
| • Exposure time | Pan 13.8 s / Ceph starting at 4.5 s | • Storage | Computer and/or USB memory stick |
| • Column | Motorized telescopic | • Power supply | 100-120 V, 220-240 V, 50/60Hz |
| • SID (Source to Image Distance) | Pan 500 mm / Ceph 1650 mm | • Amperage | 8 A |

